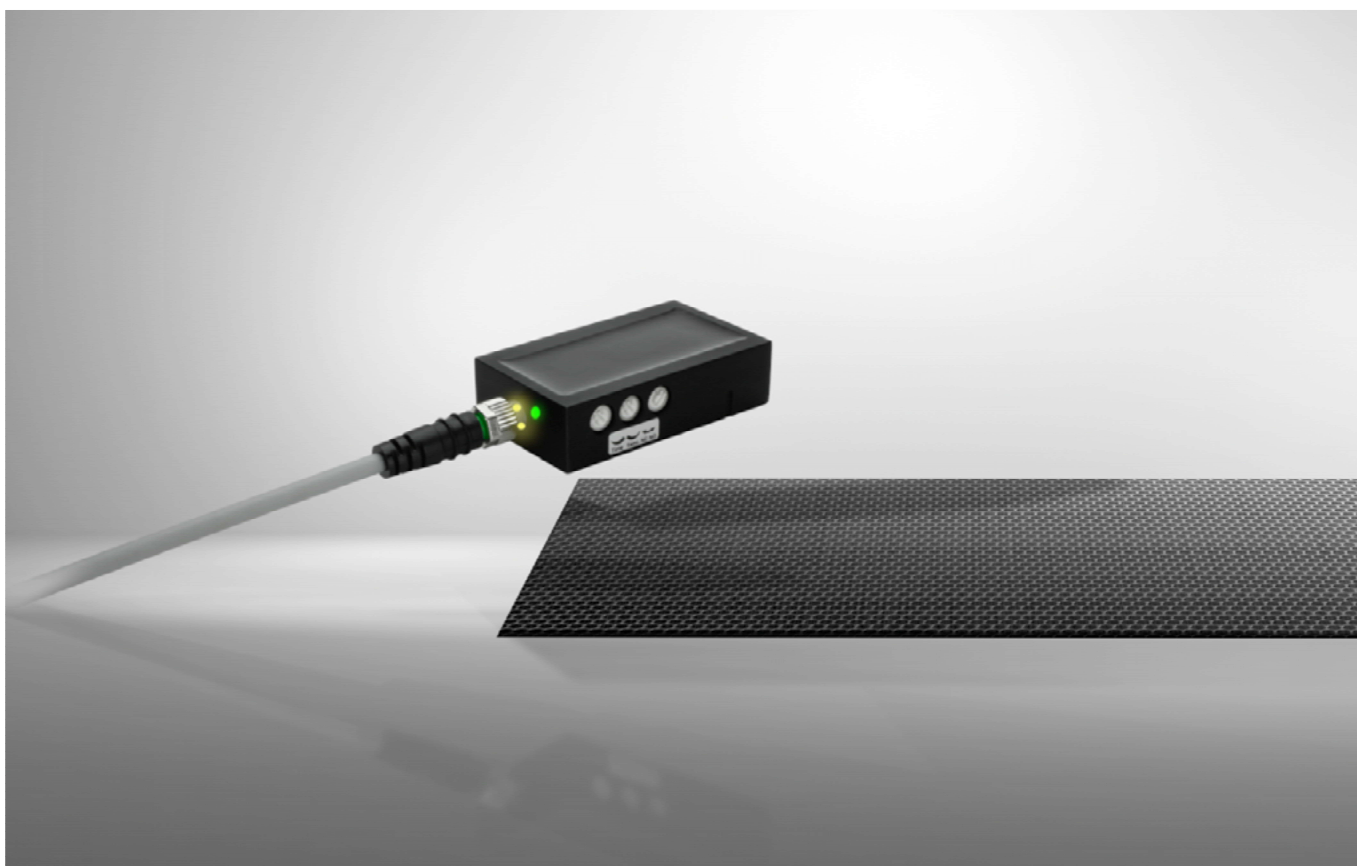


## Optical movement sensors



Our special sensors solve special detection tasks and are designed for specific applications. di-soric's range of products thus includes movement sensors for contact-free detection of movements.



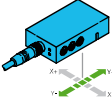



## OBS OPTICAL MOTION SENSORS

The OBS optical movement sensors are used for contact-free close-range detection of movements and direction of movement. The sensors have a detection range of 20 mm to 40 mm. They can distinguish between movement and standstill and, have an option for detecting the direction of movement. The standstill speed up to 5 m/s is easy to set using a potentiometer.



Technical data (typ.)	+20 °C, 24 VDC
Service voltage	10 to 30 V DC
No-load current	30 mA
Diameter of light spot	Ø 2.0 mm
Working distance	30 ± 10 based on material
Pulse stretching	1 to 1,000 ms, adjustable
Activation time	10 ms
Emitted light	Infrared laser, 850 nm
Laser class (EN 60825-1)	1M
Ambient light immunity	5 kLx
Ambient temperature	+5 to +45 °C
Insulation proof voltage	500 V
Protection class	IP 67
Protection class	III, operation on protective low voltage
Housing material	Aluminum, black anodized
Window material	PMMA

	Movement sensor	Detection of direction	Emitted light	Speed (m/s, based on material)	Push-pull, 150 mA	NO/NC, switchable	NO	Voltage drop (V)	LED: Switching output	LED: Switching output (yellow), operation (green)	Plug connector	Connection cable (optionally available)	Product description
<b>OBS Optical motion sensors</b>													
	■		 Laser, infrared	< 5.0	1x	■		2.5		■	M8, 3-pin	TK ...	OBS 60 M 30 G3-T3
	■	X or Y	 Laser, infrared	< 5.0	2x		■	2.0	2x		M8, 4-pin	TK ... /4	OBSR 60 M 30 G8-T4